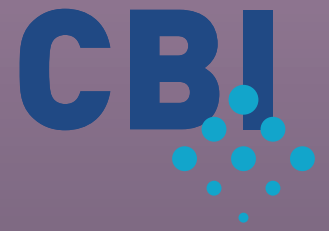


PREVIEW FASHION FORECAST

spring-summer 2009



On the next four pages you will find the preview for the season spring-summer 2009. Each page consist of a 'working-sheet', showing the most characteristic styles and details, belonging to a specific theme of our Fashion Forecast.

Click to enlarge.



Clear



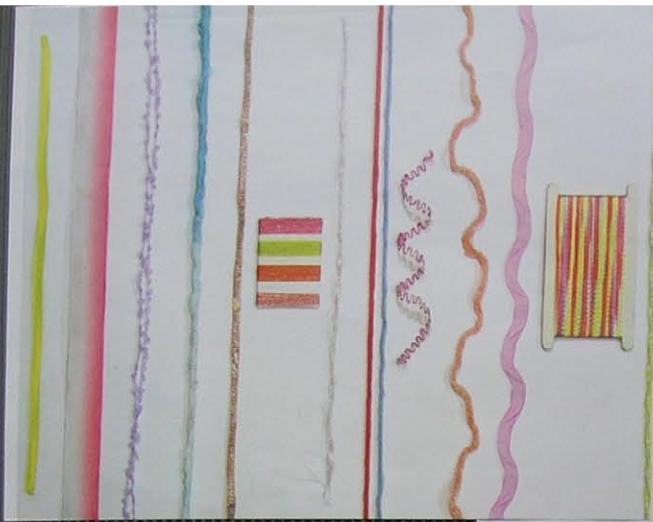
Strict



Natural



Artistic

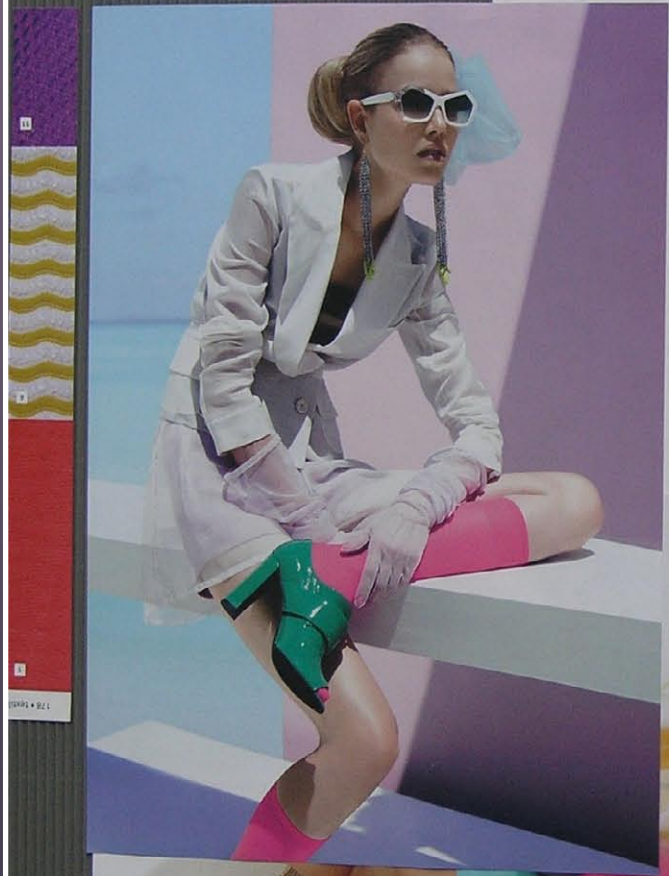


A fluorescent spectrum of colour from Paul &

	12-0740 TCX
	18-2333 TCX
	15-4101 TCX
	13-1031 TCX
	13-4910 TCX
	11-0601 TCX
	16-1106 TCX
	16-1451 TCX
	13-2805 TCX



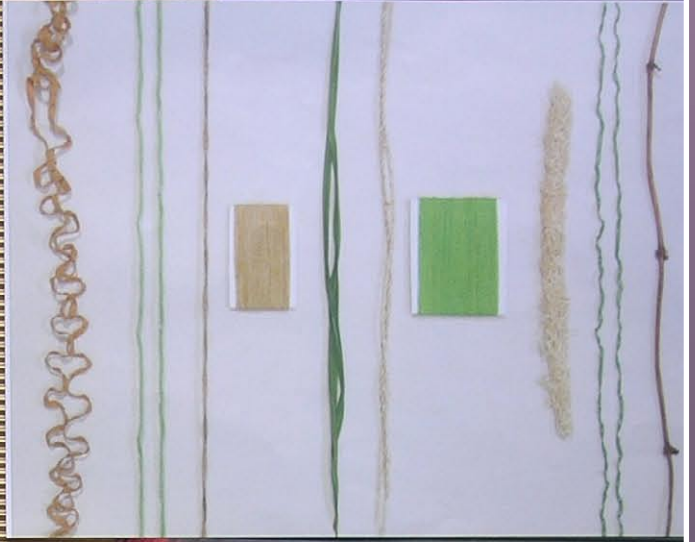
ANZÜGE IN PASTELLTÖNEN
 Nicht ganz so grau-weißer Anzug, ist so frisch und fröhlich. Mit subtilen Details sind sie auf jeden Fall übertrieben.
 Mindestens 200 Euro, wenn nicht mit Versandhandel. ca. 200 Euro von H. SANDER



STRAPE + BEL







	18-1016 TCK
	14-4904 TCK
	16-1144 TCK
	14-0108 TCK
	16-6240 TCK
	16-0946 TCK
	18-0538 TCK
	13-0317 TCK
	15-0543 TCK
	11-0601 TCK
	16-0953 TCK



